

**TBPOC FEBRUARY 6, 2015**

**SUPPLEMENTAL PACKET**

**TBPOC URGENT MEETING  
February 6, 2015  
Executive Session: 3:00pm – 3:15pm  
Regular Session: 3:15pm – 4:00pm  
Dial-in Number: 1(866) 803-2146; Access Code: 2474385**

<b>Item Number/ Topic</b>	<b>Presenter</b>	<b>Time</b>	<b>Desired Outcome</b>
<b>1. EXECUTIVE SESSION</b> a. SFOBB Self-Anchored Suspension (SAS) Outstanding Work			
<b>2. CHAIR'S REPORT</b>	S. Heminger, BATA		Information
<b>3. PROGRESS REPORTS</b> a. Risk Management Fourth Quarter 2014 update ** b. 2014 Fourth Quarter Project Progress and Financial Update**	R. Foley, CT P. Lee, BATA	15 min 10 min	Information Approval
<b>4. SAN FRANCISCO-OAKLAND BAY BRIDGE UPDATES</b> a. SAS Update**	B. Maroney	15 min	Information
<b>5. OTHER BUSINESS</b> a. Report on matters discussed and actions taken at Urgent Meeting b. Report on matters discussed and actions taken during Executive Session	NA S. Heminger, BATA	NA 5 min	NA Information
<b>6. GENERAL PUBLIC COMMENT</b>			
<b>Next TBPOC Regular Meeting: March 5, 2015, Mission Bay Office, 325 Burma Road Oakland, CA , 10:00am – 2:00pm</b>			

\* Attachments

\*\*Attachments to be sent under separate cover

**Accessibility and Title VI:** TBPOC provides services/accommodations upon request to persons with disabilities and individuals who are limited-English proficient who wish to address Committee matters. For accommodations or translations assistance, please call the Metropolitan Transportation Commission (MTC) at 510.817.5757 or 510.817.5769 for TDD/TTY. We require three working days' notice to accommodate your request.

**可及性和法令第六章：** MTC 根據要求向希望來委員會討論有關事宜的殘疾人士及英語有限者提供服務/方便。需要便利設施或翻譯協助者，請致電 510.817.5757 或 510.817.5769 TDD / TTY。我們要求您在三個工作日前告知，以滿足您的要求。

**Acceso y el Titulo VI:** El TBPOC puede proveer asistencia/facilitar la comunicacion a las personas discapacitadas y los individuos con conocimiento limitado del ingles quienes quieran dirigirse a la Comité. Para solicitar asistencia, por favor llame a la Comisión Metropolitano de Transporte (MTC) al numero 510.817.5757 o al 510.817.5769 para TDD/TTY. Requerimos que solicite asistencia con tres dias habiles de anticipacion para poderle proveer asistencia.

**Meeting Conduct:** In the event that any public meeting conducted by TBPOC is willfully interrupted or disrupted by a person or by a group or groups of persons so as to render the orderly conduct of the meeting unfeasible, the Chair may order the removal of those individuals who are willfully disrupting the meeting. Such individuals may be subject to arrest. If order cannot be restored by such removal, the members of the committee may direct that the meeting room be cleared (except for representatives of the press or other news media not participating in the disturbance), and the session may continue on matters appearing on the agenda

## **ITEM 2: CHAIR'S REPORT**

### **ITEM 3: PROGRESS REPORTS**

**a. Risk Management Fourth Quarter  
2014 update**

**b. 2014 Fourth Quarter Project  
Progress and Financial Update**

**TO:** Toll Bridge Program Oversight Committee (TBPOC)      **DATE:** February 6, 2015

**FR:** Rich Foley, SFOBB Risk Manager , Caltrans

**RE:** Agenda No. - 3a

Item- Risk Management Fourth Quarter Update

---

**Recommendation:**

For Information Only

**Cost:**

NA

**Schedule Impacts:**

NA

**Discussion:**

The Department plans to present an update on the Risk Management 4<sup>th</sup> Quarter Results.

The next quarterly risk management report will assess in detail risks to the New East Span projects' remaining capital and support budgets based on an updated risk register including the ongoing SAS tower anchor rods grouting work, the island YBITS2 contracts and adjacent ramp work, the Pier E3 Demolition CM/GC contract issues, the remaining demolition contracts and related environmental issues, and a review of the overall program funding and expenditures.

**Attachments:**

Risk Management Results Fourth Quarter 2014



# TBPOC Briefing - DRAFT Risk Management Results Fourth Quarter 2014



TOLL BRIDGE PROGRAM  
OVERSIGHT COMMITTEE

CALTRANS BAY AREA TOLL AUTHORITY CALIFORNIA TRANSPORTATION COMMISSION

# Summary Of Q4 Changes

## **\$14 Million Decrease in Total Draw this Quarter\***

- **\$8.7 million Increase in Capital Outlay Forecast**
  1. \$8.6M increase in 504/288 contract
  2. \$3.9M increase in Cantilever Dismantling
  3. \$4.0M decrease in YBITS2 contract
  4. Misc. increase/decrease in other contracts
- **\$23.1 million Decrease in Capitol Outlay Risk\***
  1. \$11.9M decrease in SAS risk
  2. \$19.3M decrease 504/288 risk
  3. \$8.1M increase in program-level risks due to transfer from SAS
- **No change in Capital Outlay Support Forecast\***
- **No change to Program Contingency**

\* COS NUMBERS SUBJECT TO CHANGE OVER NEXT FEW WEEKS



# Q4 RMC Results

	50% Probable Risk Management Cost			
	Q4 2014	Q3 2014	Change	% Change
Marine Structures Dismantling	27,277,000	26,526,000	751,000	3
504' & 288' Steel Structures Dismantling	50,944,000	70,197,000	(19,253,000)	(27)
Cantilever Dismantling	4,189,000	6,557,000	(2,368,000)	(36)
OTD2 Eastbound	2,922,000	2,922,000	0	0
OTD Detour	188,000	75,000	113,000	151
Self-Anchor Suspension	7,172,000	19,072,000	(11,900,000)	(62)
YBI#1 Mainline Structures	2,400,000	1,167,000	1,233,000	106
YBI#2 Post Traffic Switch	39,327,000	39,104,000	223,000	1
<b>Total East Span</b>	<b>134,419,000</b>	<b>165,620,000</b>	<b>(31,201,000)</b>	<b>(19)</b>
Program-level risks (not in a contract)	17,452,000	9,392,000	8,060,000	86
<b>Total Capital Outlay Risk</b>	<b>151,871,000</b>	<b>175,012,000</b>	<b>(23,141,000)</b>	<b>(13)</b>
COS Risks	39,900,000	39,900,000	0	0
<b>Total Risk</b>	<b>191,771,000</b>	<b>214,912,000</b>	<b>(23,141,000)</b>	<b>(11)</b>
Draw on Program Contingency	156,471,000	170,912,000	(14,441,000)	(8)
Contract Contingency	35,300,000	44,000,000	(8,700,000)	
Program Contingency Balance	135,210,000	135,210,000	0	
Total Contingency	170,510,000	179,210,000	(8,700,000)	

COS NUMBERS SUBJECT TO CHANGE OVER THE NEXT FEW WEEKS

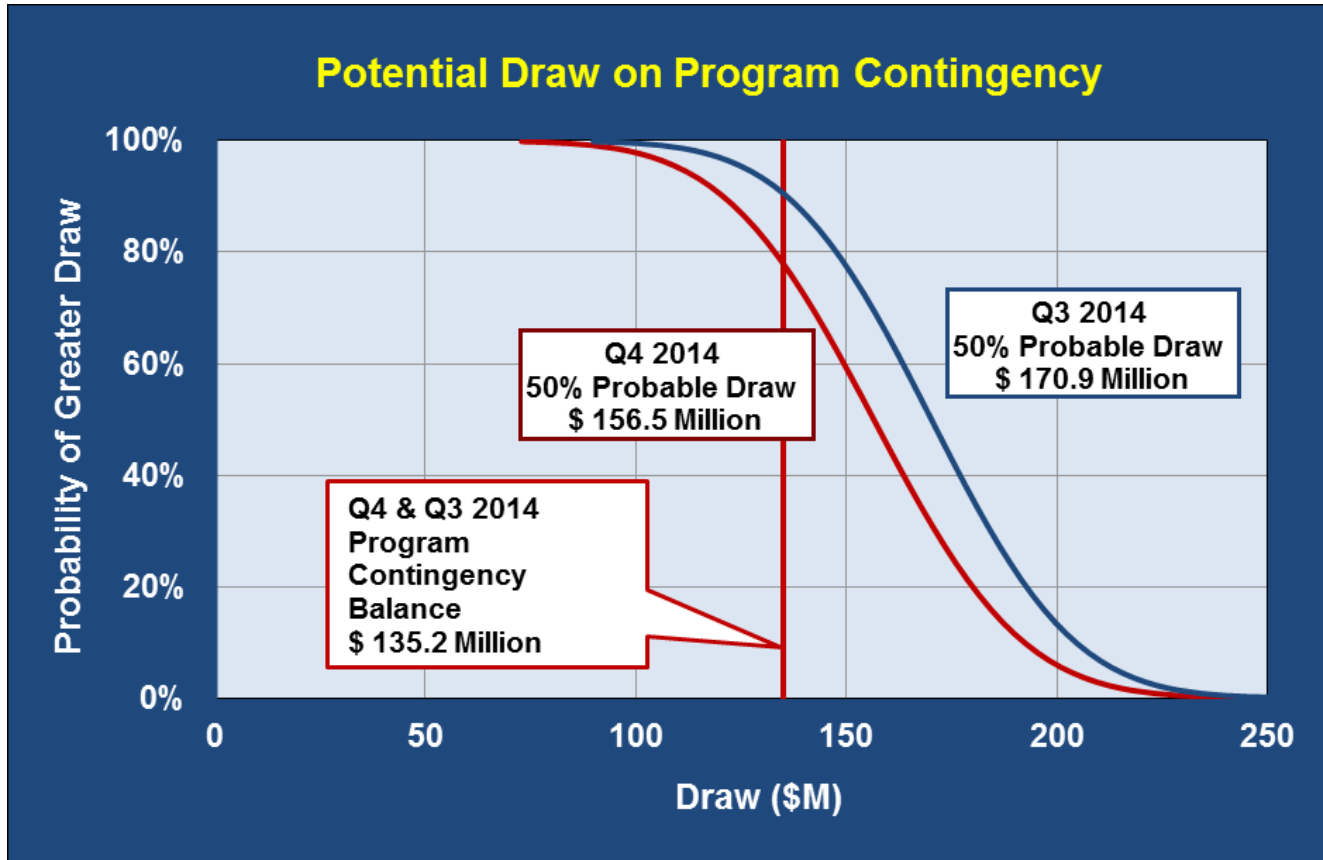
# COS Changes\*\*

No change recorded this quarter.

Contract	50% Probable COS Differential (\$M)		
	Q4 2014	Q3 2014	Change
SAS	14.2	14.2	0.0
YBI Detour	0.0	0.0	0.0
YBITS #1	0.0	0.0	0.0
YBITS #2	7.3	7.3	0.0
OTD #2	5.7	5.7	0.0
OTD Detour	0.3	0.3	0.0
Program-level	7.6	7.6	0.0
Demolition	4.5	4.5	0.0
<b>Total East Span</b>	<b>39.6</b>	<b>39.6</b>	<b>0.0</b>
West Approach	0.3	0.3	0.0
Antioch			0.0
Dumbarton			0.0
<b>Total COS Risk</b>	<b>39.9</b>	<b>39.9</b>	<b>0.0</b>
* COS Cost Differential is measured from the current COS Budget			

\*\*COS numbers subject to change over the next few weeks. It is recognized going forward in the future that additional consideration of potential COS costs impacts will be included in the future Risk Management reports.

# Q4 Draw



POTENTIAL DRAW SUBJECT TO CHANGE AS A RESULT OF EXPECTED COS CHANGES

# 50% Probable Risk vs. Remaining Contingency

	50% Probable Risk	Remaining Contract Contingency	Draw on Program Contingency
OTD1 Westbound	0		
E2/T1	0		
SSD	0		
Stormwater	0	1.0	(1.0)
West Approach	0	12.6	(12.6)
Submarine Cable	0		0.0
Antioch	0		0.0
Dumbarton	0		0.0
<b>Completed Projects</b>	<b>0</b>	<b>13.6</b>	<b>(13.6)</b>
OTD2 Eastbound	2.9	(0.5)	3.4
OTD Detour	0.2	0.6	(0.4)
Self-Anchor Suspension	7.2	6.6	0.6
YBI#1 Mainline Structures	2.4	3.5	(1.1)
YBI#2 Post Traffic Switch	39.3	11.2	28.1
YBI#3	0.0	1.1	(1.1)
<b>East Span Total</b>	<b>52.0</b>	<b>22.5</b>	<b>29.5</b>
Program-level risks (not in a contract)	17.5	0.0	17.5
COS Risks	39.9	0.0	39.9
Right-of-way and Mitigation		3.4	(3.4)
<b>Program-wide</b>	<b>57.4</b>	<b>3.4</b>	<b>54.0</b>
Marine Structures Dismantling	27.3	(4.4)	31.7
504' & 288' Steel Structures Dismantling	50.9	(4.4)	55.3
Cantilever Dismantling	4.2	4.6	(0.4)
<b>Demolition Total</b>	<b>82.4</b>	<b>(4.2)</b>	<b>86.6</b>
<b>Totals</b>	<b>191.8</b>	<b>35.3</b>	<b>156.5</b>
Program Contingency Balance			135.2

DRAW ON PROGRAM SUBJECT TO CHANGE AS A RESULT OF EXPECTED COS CHANGES

# Challenge Going Forward

- Project close-out - YBITS1 & OTD2 (Near Term) & SAS
- Environmental Risks Continue to Increase Based on Communication with National and State Agencies
- Some opportunities for cost mitigation include:
  1. Eliminate the risk related to cost estimate uncertainty of 504/288 and Marine Foundations contracts if bids come in under the estimates.
  2. Obtain Concurrence to Leave Foundations – E2 & E19-E22



## Project Risk Management

**TO:** Toll Bridge Program Oversight Committee (TBPOC)      **DATE:** February 6, 2015

**FR:** Peter Lee, Principal, BATA

**RE:** Agenda No. - 3b

Item- 2014 Fourth Quarter Project Progress and Financial Update

---

**Recommendation:**

**APPROVAL**

**Cost:**

NA

**Schedule Impacts:**

NA

**Discussion:**

Staff to present the status of 2014 Fourth Quarter Project Progress and Financial Update Report.

**Attachment(s):**

None

## **ITEM 4: SFOBB UPDATES**



**TO:** Toll Bridge Program Oversight Committee (TBPOC)      **DATE:** February 6, 2015

**FR:** Brian Maroney, SFOBB Project Chief Engineer , Caltrans

**RE:** Agenda No. - 4

Item- SAS Update – Tower Anchor Rods

---

**Recommendation:**

For Information Only

**Cost:**

Potential cost impacts to be determined.

**Schedule Impacts:**

Potential schedule impacts to be determined.

**Discussion:**

The Department plans to present the overall ongoing progress on the Tower Anchor Rod grouting field and lab activities.

As discussed in the January 27<sup>th</sup> TBPOC meeting, the Department presented information on the recently extracted rod sample for further galvanization and mechanical testing. Please refer to the Anchor Rod Testing Summary attachment. These results will be available by late February/early March; an update will be presented at the March 5<sup>th</sup> TBPOC meeting.

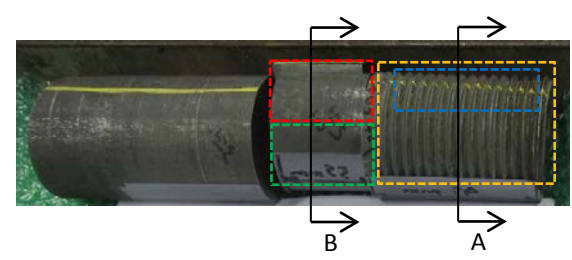
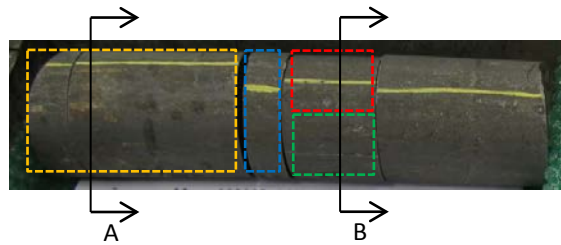
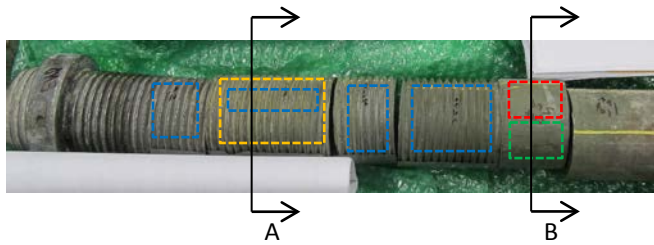
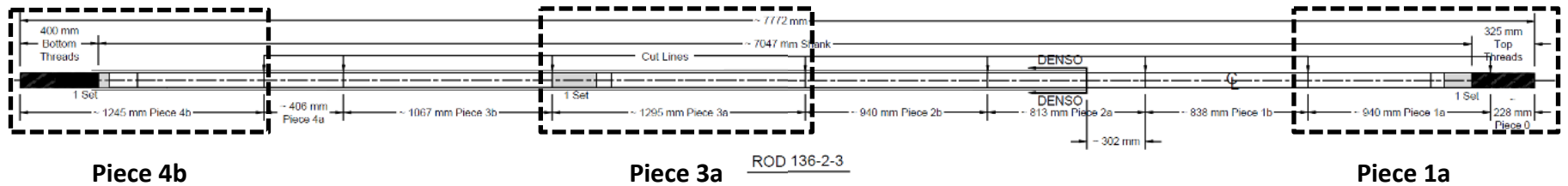
The Contractor is progressing with the grouting mockup trials on the pier in collaboration with the Department. Over 10 trials have been completed to date and more trials are underway to confirm the cleaning and grouting procedures.

The Contractor is continuing with the ongoing cleaning operations of the anchor rod inspection holes (420 to grout). Grouting operation for inspection holes will not continue until the Contractor has shown the Department acceptable procedures and the sample rod testing results are complete.

**Attachments:**

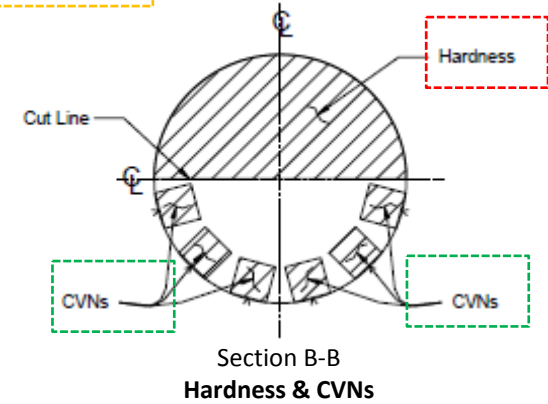
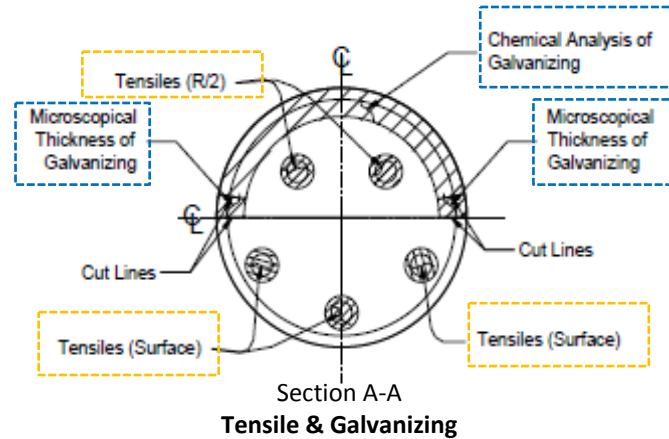
Tower Anchor Rod Testing Summary

# ASTM A354 Grade BD Tower Base Anchor Rod 136-2-3



## Tests being performed by Exova (Glendale Heights, IL)

- Wet Magnetic Particle Testing
- Analysis of Galvanizing
  - Microscopical Thickness
  - Chemical Analysis
- Mechanical Testing
  - Tensile Test
  - Hardness (Knoop & Rockwell)
  - Charpy Impact



## **ITEM 5: OTHER BUSINESS**

- a. Report on matters discussed and actions taken at Urgent Meeting
- b. Report on matters discussed and actions taken during Executive Session

## **ITEM 6: GENERAL PUBLIC COMMENT**