



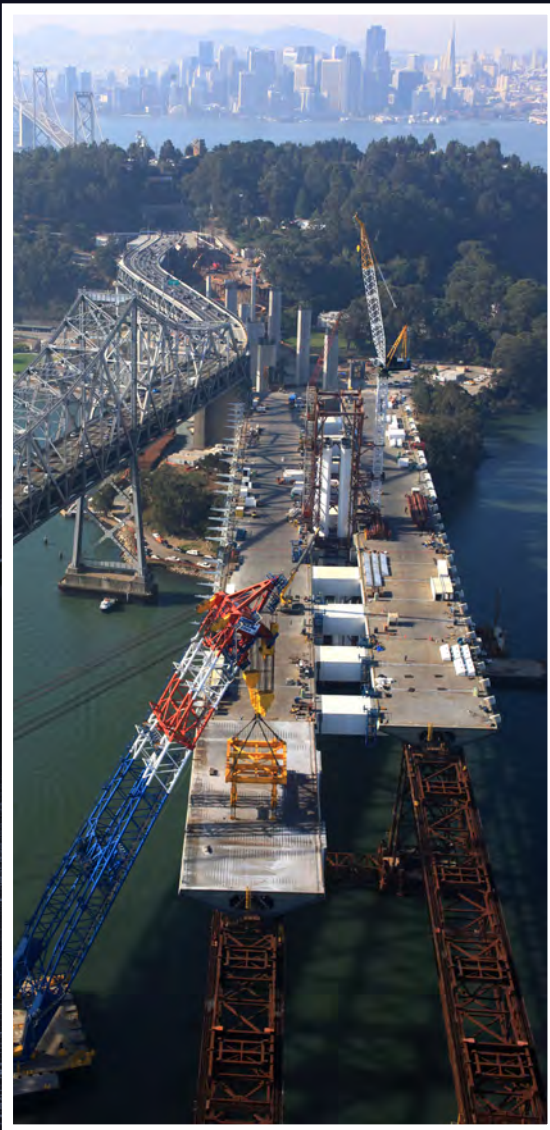
BAY BRIDGE NEWS

YOUR COMMUNITY, YOUR BRIDGE

CALTRANS BAY AREA TOLL AUTHORITY CALIFORNIA TRANSPORTATION COMMISSION

We're making history.

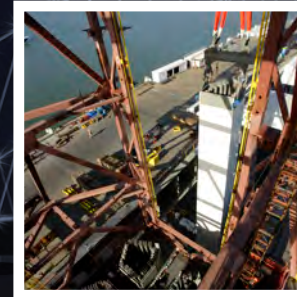
December 2010, Issue 10



SAS CLOSING THE GAP!

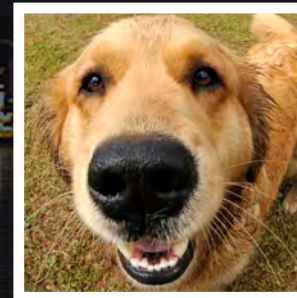
The Self-Anchored Suspension Span (SAS) continued its march eastward in November, with crews placing the ninth east- and westbound deck sections, helping close the gap between the SAS and Skyway. Only five more east- and westbound sections to go before that gap is a thing of the past!

In December, the holidays will start early when the third set of tower sections and the tenth deck sections arrive at the beginning of the month. If the weather cooperates, those new sections could be in place before the year ends, giving everyone another reason to celebrate the arrival of 2011, when placement of tower and deck sections ends and work on the nearly 1-mile-long single cable begins.



HOW DID THEY DO THAT?

Ever wonder just how we lift tower sections weighing millions of pounds into place? Or how we secure and connect these sections, which now tower nearly 30 stories over the bay, once they are placed on top of each other? Or why the tower was designed to look the way it does? Check out the latest SAS videos on BayBridge360.org, which offers dazzling perspectives of the construction that give viewers a tantalizing glimpse inside the tower itself!



SLOW FOR THE BONE ZONE

Dogs living near the Bay Bridge in San Francisco will finally have their day, as a much-anticipated dog park at the corner of Beale and Bryant streets is on its way. Funding has been recently approved for the park, which will sit right next to the Bay Bridge anchorage.

Watch for future editions of this newsletter and BayBridgeInfo.org for more information about this unexpected benefit from the Bay Bridge seismic retrofit work.

Bay Bridge Public Information Office
311 Burma Road, Oakland, CA 94607
Tel: (510) 286-7167
email: info@baybridgeinfo.org

Bay Bridge Community Liaison
(415) 286-1553

For information online, visit:
BayBridgeInfo.org
BayBridge360.org
Twitter.com/baybridgeinfo